



Porta-Brickie Operating Instructions and General Maintenance

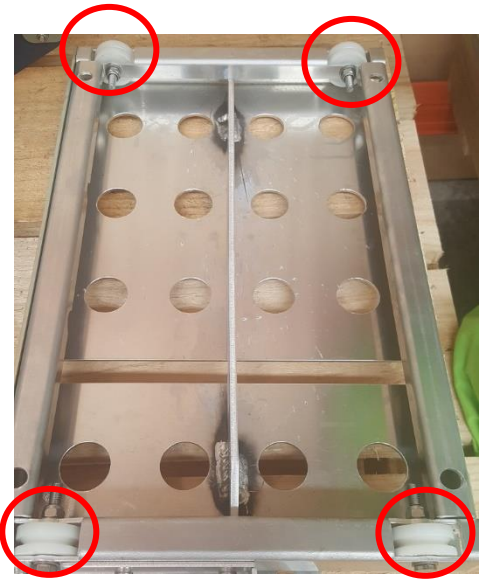
Power Source: DO NOT USE FROM MULTI BOX ON LONG LEADS

Start Up:

1. Before starting, check the blades is on correctly.
2. Check that it is turning freely and not hitting the “water feed” inside the guard.
3. Check the trolley is on the rails and moving freely.

General Maintenance:

Deck wheels: after 3-4 days use, check the wheels are turning freely. From new there is a settling in period, the wheels should turn freely but not wobble. Tighten with 13mm diameter ring spanner. Apply CRC or WD40 regularly.



Apply CRC or WD40 to all moving parts and the two (2) brass screws on the blade guard.

Remove the lead out of the socket regularly. If permanently left in will cease in there.

